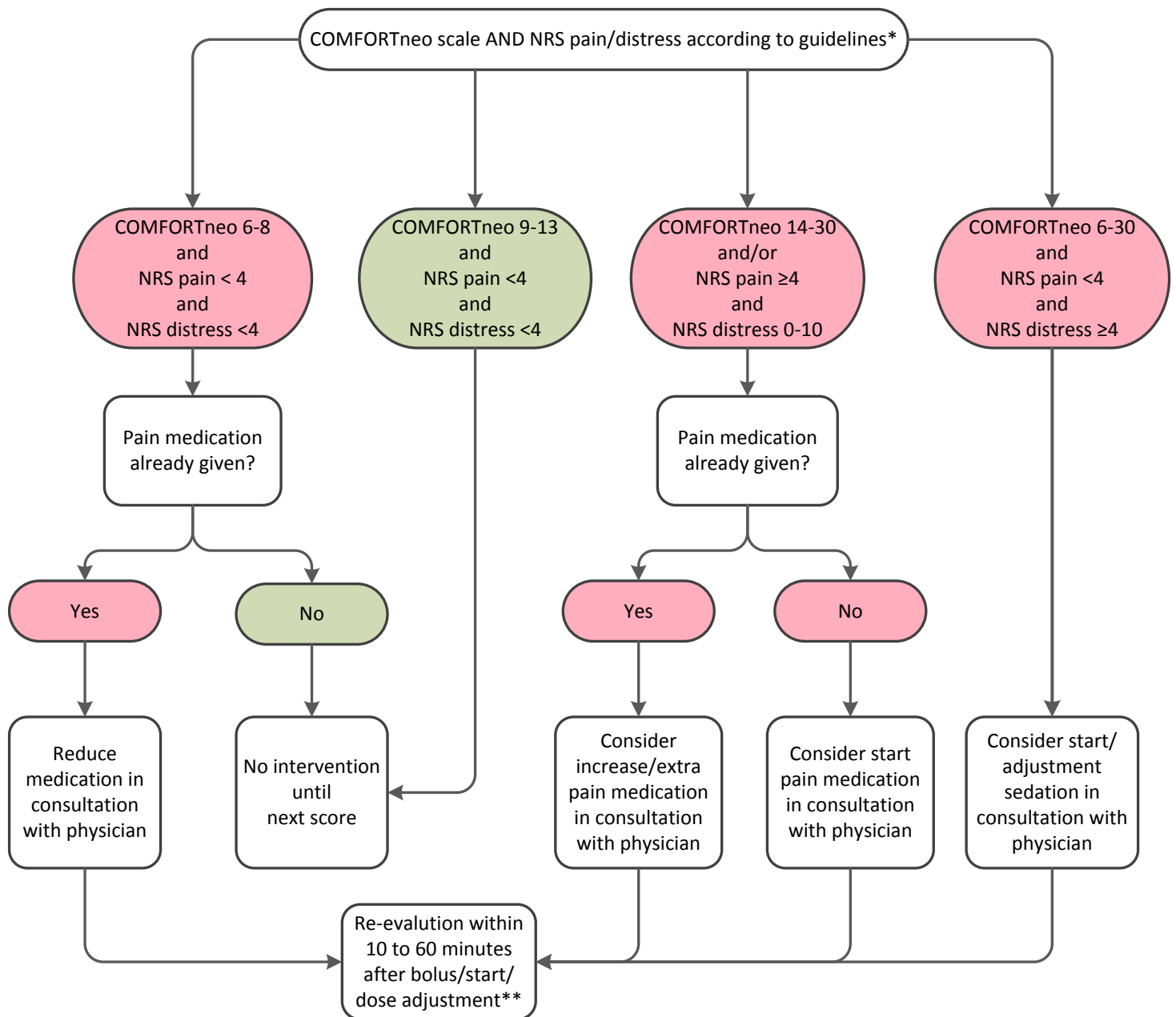


NICU pain management decision-tree



General guidelines

- Apply COMFORTneo scale always in combination with NRS pain and NRS distress
- In case of high scores, reflect on possible causes of pain/distress, such as subcutaneous infusion, mucus, medication side-effects, posture, hunger

*Scoring guidelines:

- Standardly, once every shift
- If pain medication given, twice every shift
- In case of suspected pain/distress
- In case of suspected oversedation

**Expected time to effect (IV):

- Fentanyl: 2-3 min.
- Midazolam: 5-10 min.
- Paracetamol: 5-10 min.
- Morphine: 20 min.